



AFRICAN CLEAN ENERGY



Combining comprehensive clean energy with the power of data.

PITCH DECK SEPTEMBER 2023



At 179.8 points, African Clean Energy is **ranked the #1 B-Corp in Europe and #2 in the world** (out of 6000+).

MARKET SIZE AND PROBLEM



Globally 3 billion people have inadequate access to energy, forcing them to cook on open fire.

- ◆ Cooking on open fire causes **emissions of 3 to 8 tonnes** of CO₂ per year
- ◆ Over **4 million deaths** a year are attributed to household air pollution
- ◆ The **#1 cause of deforestation** in a majority of African nations
- ◆ Opportunity to **increase global demand for pellets by up to an order of magnitude**. Half tonne per household per year.



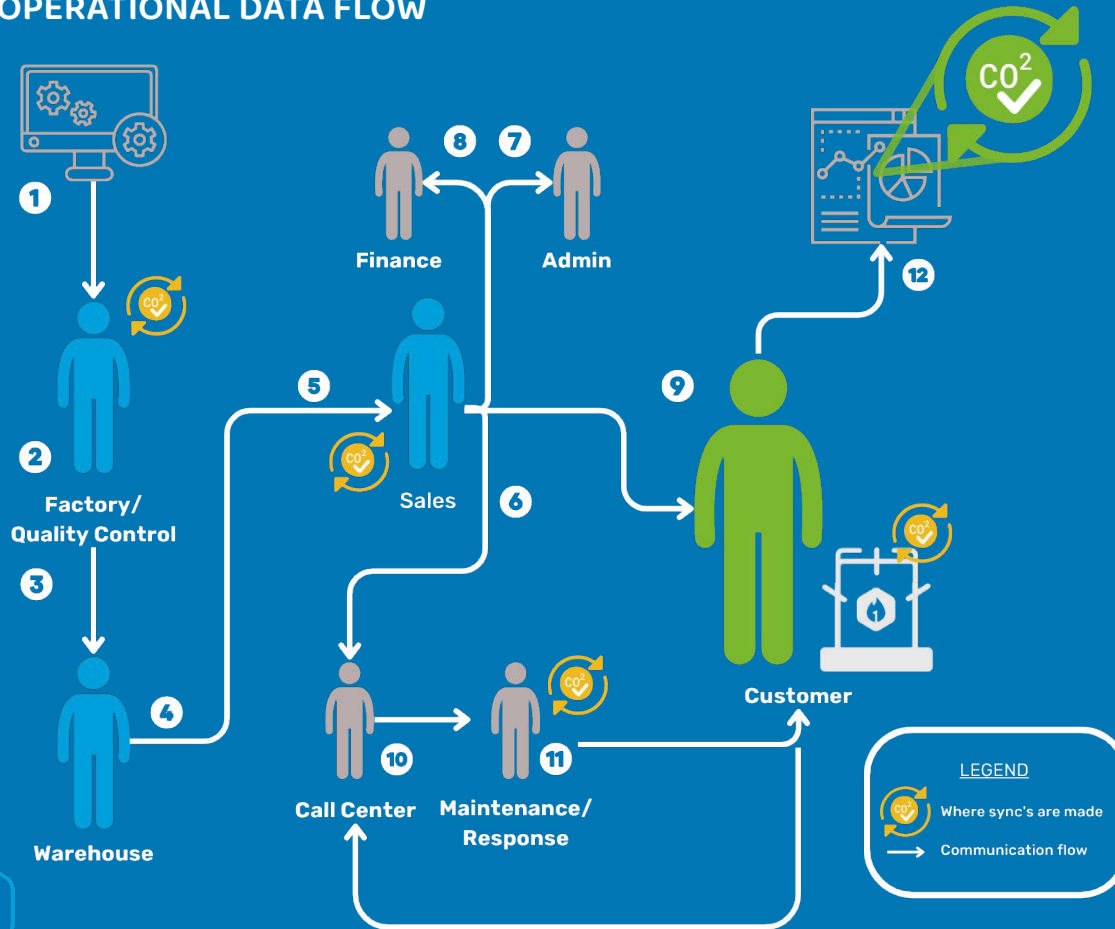
THE ACE SOLUTION

The ACE One is an integrated hybrid energy system that addresses the essential energy needs of low-income households, providing both thermal energy and electricity.

- ◆ Saves Fuel
- ◆ Smokeless Combustion
- ◆ Provides Lighting and Phone Charging
- ◆ Usage Data Reflected
- ◆ Fuel Tracked through Supply Chain:
Pellets / Briquettes



OPERATIONAL DATA FLOW

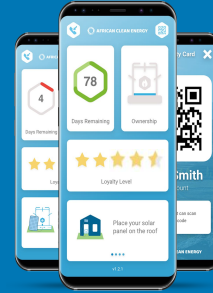


- 1** Generate serial numbers.
- 2** Factory team receives and **assembles** the stove and **lasers** the serial number onto the stove.
- 3** Quality Control (QC) performed and **registration** in Salesforce to match Serial number and Controller ID.
- 4** Boxing, stickering & **scanning into InvMan** is all conducted to create a saleable product.
- 5** Transfer to sales team who makes the sale and **creates a customer record, sets up the stove and ACE Connect**.
- 6** The call center is informed of a sale. They **onboard** the customer into our system, **verifying all details**.
- 7** The admin team also **reviews the sale and payments**. If on loan, they're requesting loan funding & track the loans.
- 8** Finance is **verifying payments**.
- 9** The customer **uses the stove, syncs, and makes monthly payments**. If issue occurs, they **contact the call center**.
- 10** The call center **chases payments, helps resolve stove issues, trains customers, encourages syncing, verifies usage data** and communicates to maintenance for field needs.
- 11** Maintenance team **resolves stove issue** reported, **chases payments, trains customers and encourages syncing**.
- 12** The **storage and transformation of usage data**, which is used to calculate the **certified carbon credit**, which is then **sold to Carbon Buyers**, who expect robust, transparent data.

THE OPPORTUNITY

ACE's available sales market is over 600 million households and counting. ACE has:

- **bespoke proprietary tech** and **scalable profitable locations** in 4 countries, with a focus on East Africa.
- **software** that can be leveraged to **replicate our operations through third parties** with footprint in new and existing markets.
- **clear demand** in both the development and humanitarian sector for data capabilities and impact monitoring that ACE can supply along with our superior hardware.



Android Integration

Superior Hardware



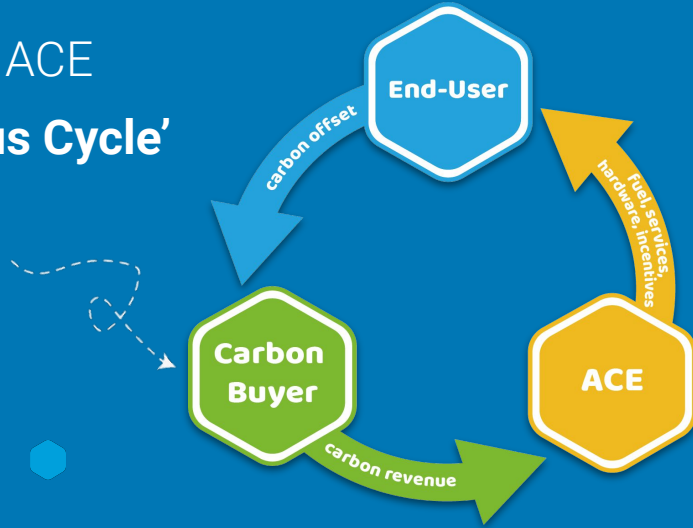
<CLICK> for product video



Real-Time Data

IMPACT MODEL

The ACE 'Virtuous Cycle'



At 179.8 points, African Clean Energy is ranked the **#1 B-Corp in Europe** and **#2 in the world** (out of 6000+).

- ✓ Accurately measures impact at a household level
- ✓ Generates revenue stream that improves affordability to poor households
- ✓ Passes the value on to the end-user based on their level of engagement
- ✓ Transparent and granular data for verification of measured impact, including carbon offsets

Key Impact Indicators 2022:

52%
Women in management or supervisory positions

323
Averted disability-adjusted life year¹

2030
People's livelihoods directly supported²