

# Policies for deployment of biomethane

**Jinlei Feng**

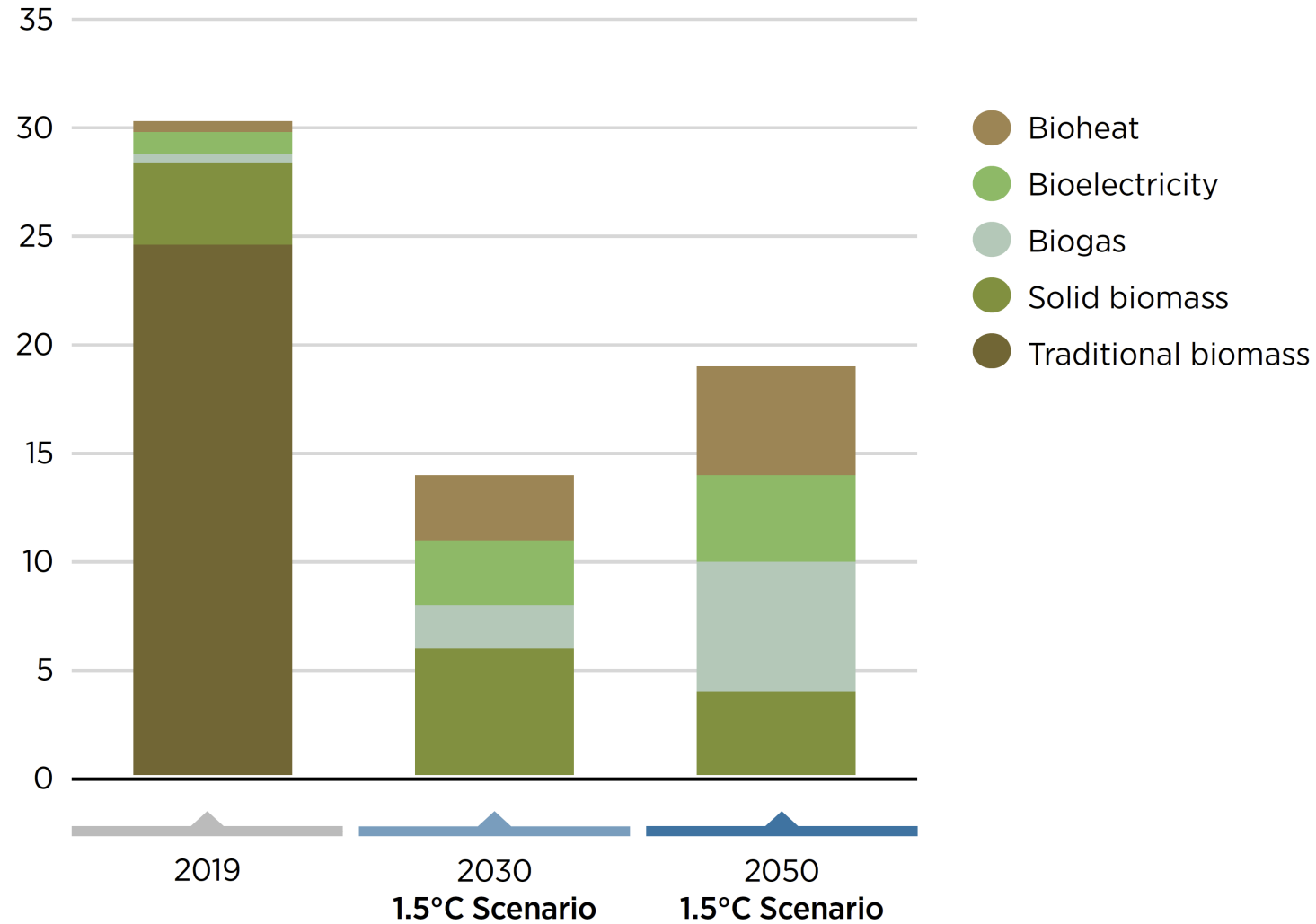
Programme Officer, Policy Advice  
International Renewable Energy Agency (IRENA)

**World Bioenergy Association Webinar , 14 March 2023**

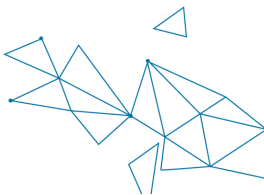


# Biogas and biomethane for buildings in IRENA's 1.5°C Scenario

Bioenergy for buildings (EJ)



Source: IRENA, 2022



# Policies and regulations are needed to tackle cross-cutting barriers

## Political and institutional barriers

- Policy uncertainty
- Weak institutional structures



## Financial and economic barriers

- Fossil fuel subsidies
- High cost
- Lack of access to affordable finance



## Technical and infrastructure-related barriers

- Low-level technology readiness
- Reliability of technologies
- Lack of infrastructure



## Supply chain-related barriers

- Lack of stable feedstock
- Lack of qualified workers and skills
- Sustainability risks



## Information and public awareness-related barriers

- Lack of reliable information
- Low public awareness

